



# HAMPSTEAD SCHOOL

Learning together Achieving together

23 March 2020

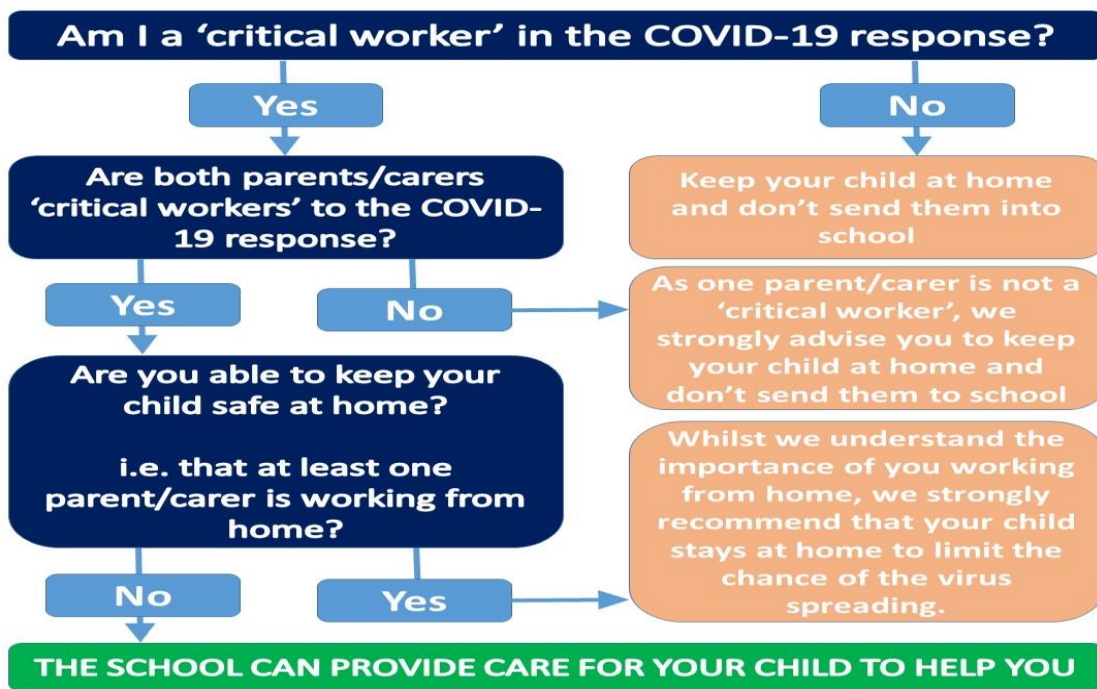
Dear Parents/Carers

## Coronavirus (COVID-19) update

I write to you on a day that feels very strange. Hampstead School is now physically closed to almost all students.

Thank you to everyone in the school community for such an efficient closedown process on Friday. Our buildings are now undergoing a deep clean and disinfection.

We are currently running a minimal service for specific students that we have contacted, and for the children of identified Critical Workers in the fight against the Coronavirus pandemic. This is detailed in my letter of 20 March, available on our website. The guiding principle is that of children being at home, where they possibly can be, so as to minimize viral transmission. This allows me to keep as many staff working from home as I can, again reducing transmission as well as anxiety for them and their families.



**Head:** Jacques Szemalikowski MA BSc(Hons) PGCE NPQH CPhys MinstP. FRSA  
Hampstead School, Westbere Road, London NW2 3RT

T: 020 7794 8133 E: [enquiries@hampsteadschool.org.uk](mailto:enquiries@hampsteadschool.org.uk) [www.hampsteadschool.org.uk](http://www.hampsteadschool.org.uk)



Please remember that if you require childcare, you should e-mail Ms.Daulphin ([h.daulphin@hampsteadschool.org.uk](mailto:h.daulphin@hampsteadschool.org.uk)) or Mr Stevens ([g.stevens@hampsteadschool.org.uk](mailto:g.stevens@hampsteadschool.org.uk)). It will expedite if you can include a scan or photo evidencing your Critical Worker status (e.g. Photograph of workplace ID).

## Exams for Year 11 and Year 13 students

If you were expecting to take public examinations this summer, you know that these will not take place.

<https://www.gov.uk/government/news/further-details-on-exams-and-grades-announced>

Ofqual are developing a system to issue grades. Exam boards will be asking teachers to submit their judgement about grades.

Importantly the guidance says *'There will also be an option to sit an exam early in the next academic year for students who wish to'. An example of this is where '...they do not feel their calculated grade reflect their performance...'*

I would therefore strongly encourage all students who were expecting to sit examinations this summer to engage with the work set by teachers and to continue revising. Until we have greater clarity regarding the new grading system and the grades issued, all students should assume that they may wish to sit the examinations described above. The safest approach is therefore to keep on preparing.

## Work for students during the closure

A reminder that Hampstead School is now fully operational as an online school. All students should follow their normal timetable of lessons, completing the normal hours of lessons & home learning as if they were at school, using the resources set by their class teacher on the online platforms. The primary vehicle for this will be Show My Homework through the RM Unify portal.

There is new information about this on the school's website and on SMHW.

I shall continue to be in touch with regular updates.

Yours sincerely



**Head:** Jacques Szemalikowski MA BSc(Hons) PGCE NPQH CPhys MinstP. FRSA  
Hampstead School, Westbere Road, London NW2 3RT

**T:** 020 7794 8133 **E:** [enquiries@hampsteadschool.org.uk](mailto:enquiries@hampsteadschool.org.uk) [www.hampsteadschool.org.uk](http://www.hampsteadschool.org.uk)



Jacques Szemalikowski  
Head



**Head:** Jacques Szemalikowski MA BSc(Hons) PGCE NPQH CPhys MinstP. FRSA  
Hampstead School, Westbere Road, London NW2 3RT

**T:** 020 7794 8133 **E:** enquiries@hampsteadschool.org.uk **www:** hampsteadschool.org.uk

